



1st Key Goal Action Items

Increase in Protected/Preserved Land¹

Goal: Reaching **24% by 2040** in protected/preserved nature-based infrastructure in the 8-county region (see county breakdown below).

Tools in the Resilience Toolbox

- [RCP Working List of Projects](#)
- [Resilient Houston Plan](#)
- [Floodplain Regulations](#)
- [Setbacks/Buffers](#)
- Rebuilding Restrictions
- Capital Improvement Programs
- [Acquisitions and Buyout Programs](#)
- [Conservation Easements](#)
- Green Bonds and [MUD Recreational Bonds](#) and Development Incentives
- [Texas Flood Infrastructure Fund](#)
- [Public/Private and Land Trust Partnerships](#)

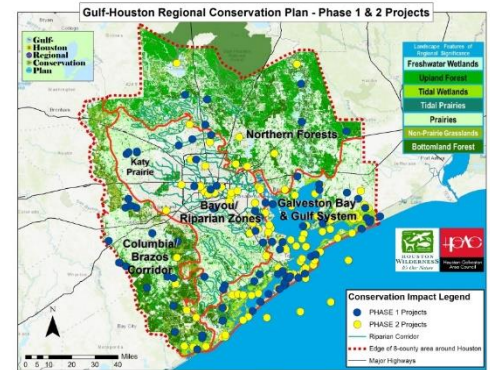
The Gulf-Houston Regional

27% is currently developed land-use
 15.6% is currently preserved nature-based infrastructure
 8.4% is agricultural land
 49% is available undeveloped land

24% nature-based infrastructure is needed by 2040

Conservation Plan (RCP) prioritizes the environmental projects in the region that are in need of full or partial funding, called the *Working List of Projects*, and tracks the funded projects bi-annually. By doing so, HW is able to measure the progress being made in the region toward achieving the 3 key goals. RCP will create a road map for land conservation across 8-county region now and for years to come.

The RCP provides an “interactive map” of the Working List of Projects which currently includes over 731,000 acres of additional land



acquisition and conservation easements to be acquired once the respective projects are funded. For projects funded over the last 5 years, more than 31,000 acres of protected/preserved land has been acquired and approximately \$400 million of funding has received. The RCP maps are designed to be regularly updated bi-annually as new projects are added to the Working List of Projects and funded projects are tracked. Phase 1 includes land acquisition and conservation easement projects and Phase 2 include restoration-based projects. In 2021, the U.S. joined the international goal to conserve 30% of U.S. lands and freshwater by 2030, called the 30x30 *America the Beautiful* Initiative. The Gulf-Houston RCP Goals overlap with these efforts.

To help advance the RCP 3 Key Goals, these activities/approaches are followed:

- Engage with federal, state and local grant programs to place emphasis on funding projects to reach the 1st Key Goal.
- Partner with HGAC to provide counties and cities with tools to add protected/preserved lands in their jurisdictions.
- Support new and existing funding sources and provide tools to advance the 3 Key Goals.
- Provide ecosystem services research on benefits of nature-based infrastructure, stabilization techniques and carbon sequestration.

County	Total Land Cover (Acres)	Total Developed Land % (with Acres)	Land Currently Protected % (with Acres)	Agricultural lands % (with Acres)	Undeveloped Land % (with Acres)
Harris	1,103,836	62% (679,088)	19.5% (215,018)	2.4% (26,479)	16.6% (183,251)
Montgomery	689,220	29% (199,167)	10.9% (74,814)	0.02% (145)	60.2% (415,094)
Fort Bend	558,738	26% (145,142)	5.6% (31,550)	13.4% (74,849)	55.0% (307,198)
Liberty	752,809	7% (53,100)	8.0% (60,595)	11.7% (88,086)	73.2% (551,027)
Waller	327,852	11% (37,116)	7.7% (25,098)	9.7% (31,905)	71.3% (233,733)
Galveston	247,594	36% (88,405)	22.8% (56,561)	0.4% (945)	41.1% (101,682)
Brazoria	893,083	15% (137,976)	21.0% (187,113)	8.4% (74,798)	55.2% (493,197)
Chambers	385,724	7% (28,183)	20.8% (80,324)	30.8% (118,851)	41.1% (158,365)
Total RCP 8 counties	4,958,857	27.6% (1,368,177)	14.7% (731,075)	8.4% (416,058)	49.3% (2,443,548)

¹ August 2022